



Fresh Food Access Report

City of Atlanta, 2020

DCP

AGLANTA



OUR GOAL:

85% of Atlanta residents will be within a half-mile to fresh, affordable food by 2022.

ATLANTA FRESH FOOD ACCESS POINTS (2020)



SUPERCENTERS



GROCERY STORES



NEIGHBORHOOD
MARKETS



FARMERS
MARKETS

Baseline: (2015) USDA LILA Food Desert Area from current [USDA Food Access Research Atlas](#). **2019 Fresh Food Access Points:** Supercenters, Grocery Stores, **Neighborhood Markets**, **Farmers Market** sell fresh fruit, vegetables (beyond a token banana, apple & orange), and may provide meat, eggs. (Ground-truthed by Georgia Tech and City of Atlanta staff in 2019). **Population served by a fresh food access point:** determined by selecting (2015) census blocks (vs. census tracts) within a half-mile of each fresh food access point. (Selected if the centroid of a census block was within the half-mile buffer of a point.) Calculated the sum of the population of selected census blocks to determine total # of residents in LILA area served by an access point. Reversed selection to determine population within USDA defined LILA area that remained beyond a .5 mile to the 2020 fresh food access points and in need of improved access to fresh, affordable food by 2022.

LILA: (2015)

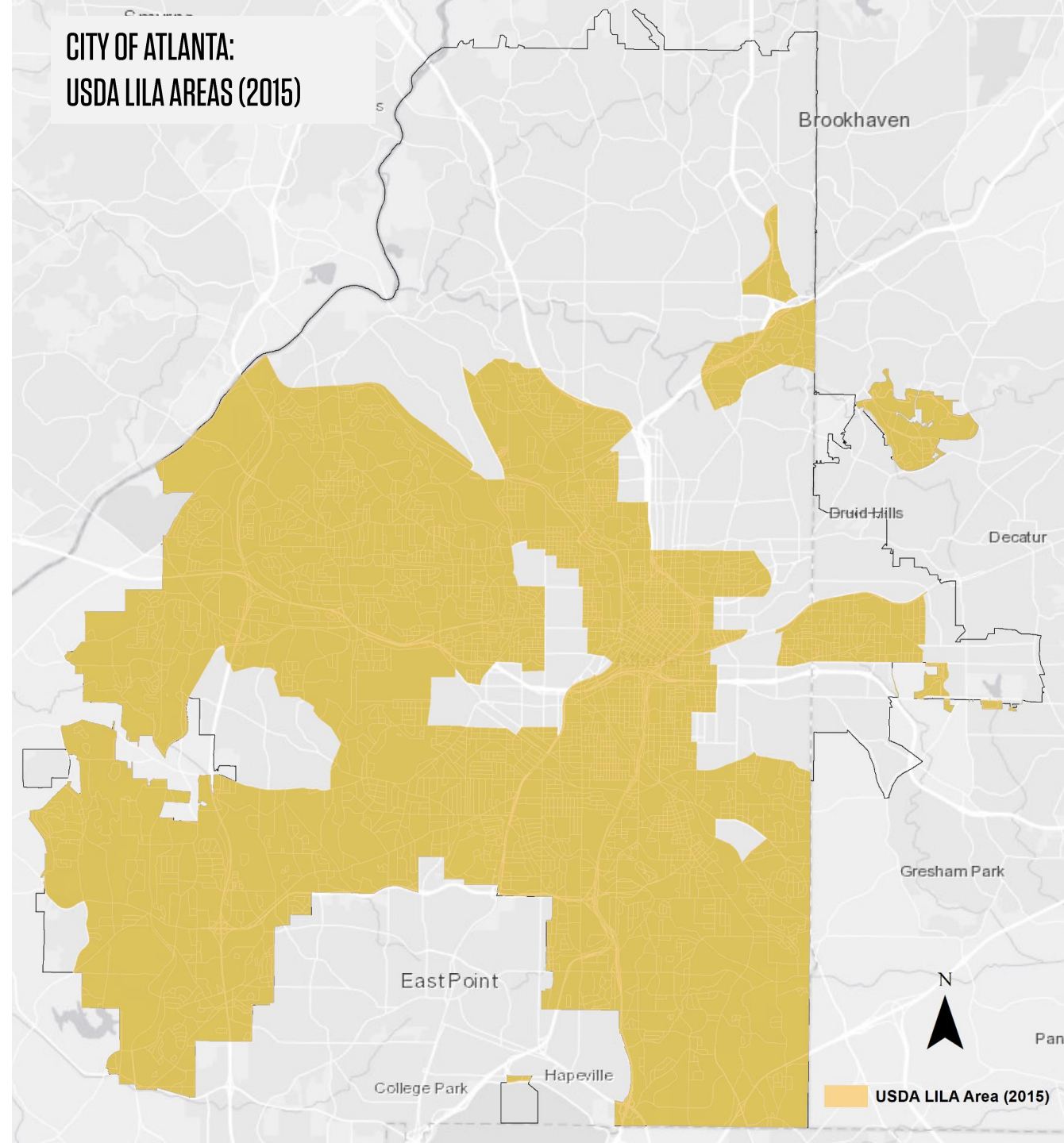
USDA-DEFINED **LOW-INCOME, LOW-ACCESS** FOOD DESERT AREA

Low-Income tract: a census tract in which over 50% of households' income does not exceed 80% of the median income for the area.

Low-Access tract: a census tract with at least 500 people, or 33 percent of the population, living more than ½ mile (urban areas) from the nearest supermarket, supercenter, or large grocery store.

- **59% of the City's total area.** 51,747 acres.
- **Part of every Council District, and Neighborhood Planning Units, except NPU A & C.**
- **52% of Atlanta residents effected (241,314 residents).**

LILA data from [USDA Food Access Research Atlas](#). USDA sources: 2015 (STARS) list of supermarkets, supercenters, large grocery stores that accept SNAP benefits. Data on income and vehicle access come from 2010-14 American Community Survey. Pop data from 2010 Decennial Census on Population and Housing.





SUPERCENTERS 2020

IMPACT ON FRESH FOOD ACCESS

10

Supercenters

100%

Accept SNAP/EBT

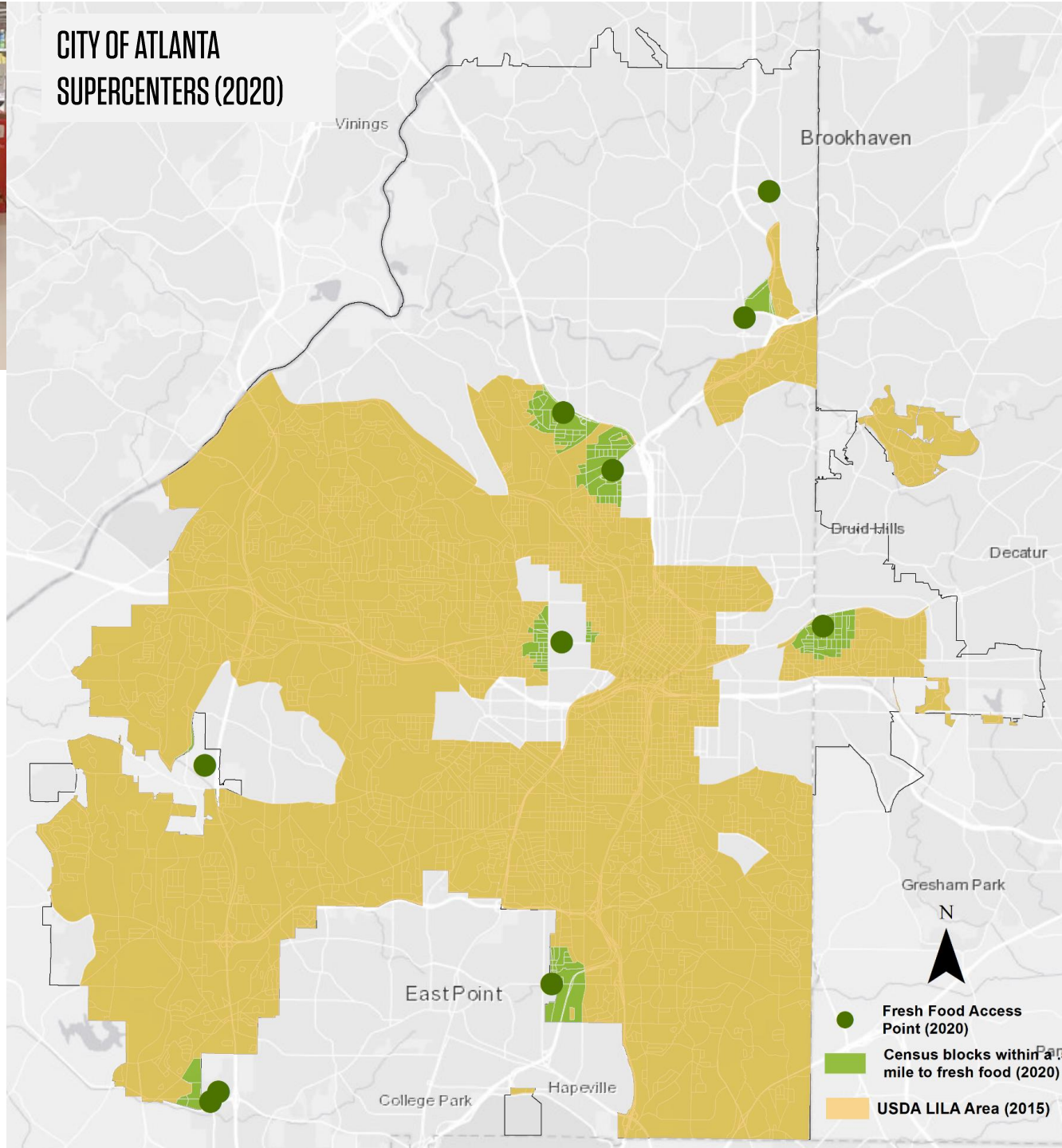
+12,732

Additional Atlanta residents living in LILA now have fresh food access.

228,582

Atlanta residents living in LILA area, reduced from 241,314 to 228,582 since 2015.

* Six supercenters are within the City of Atlanta limits, four within a half-mile from official city boundary (Walmart, Target, and a BJ Wholesale). Three are located within the 2015 USDA defined LILA area. These 10 supercenters serve a total of 12,732 residents living in LILA area.





GROCERY STORES 2020

IMPACT ON FRESH FOOD ACCESS

44

Grocery Stores

100%

Accept SNAP/EBT

+ 26,942

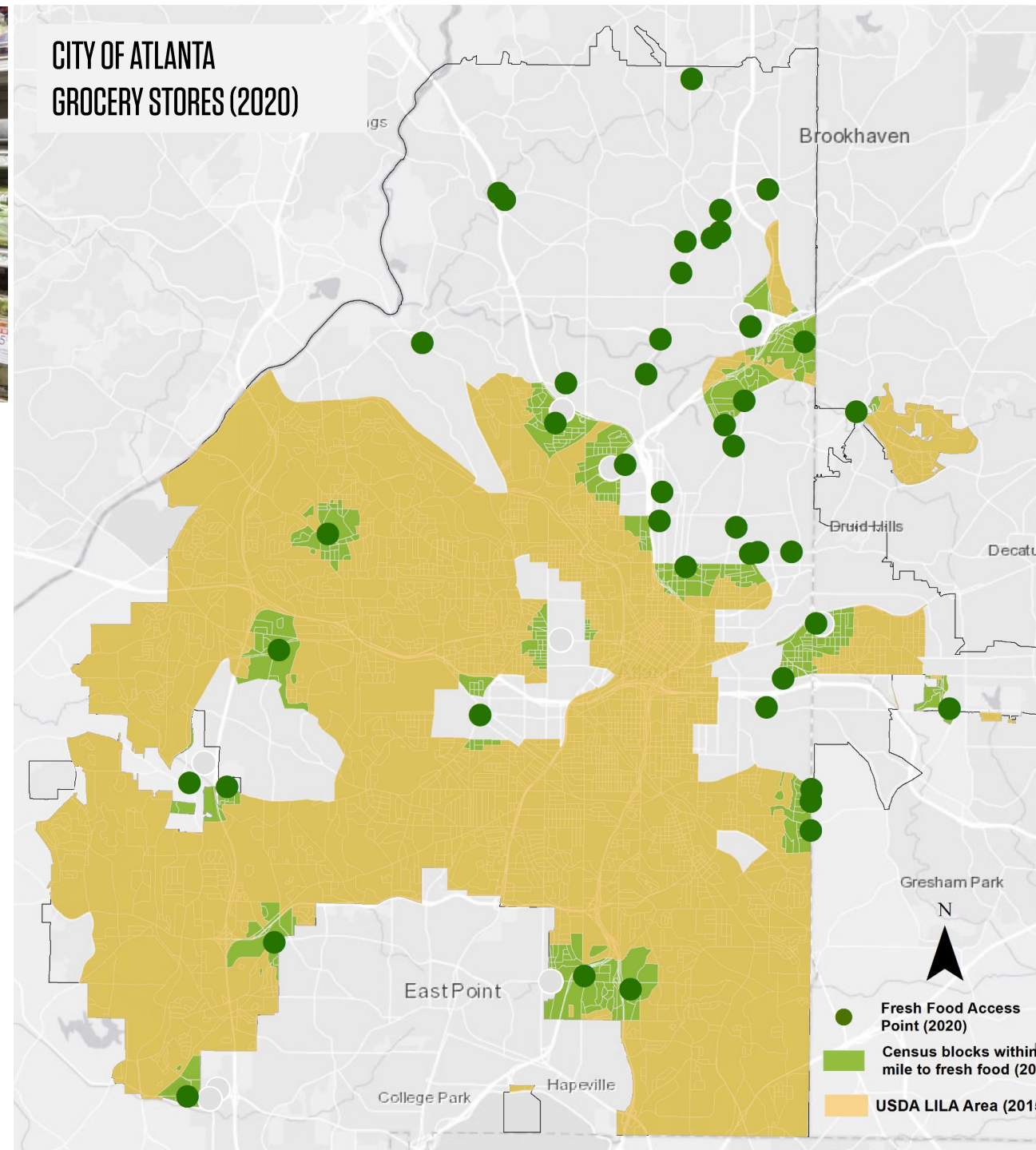
Additional Atlanta residents living in LILA area can access fresh food.

201,640

Atlanta residents living in LILA area, reduced from 228,582 to 201,640.

* Forty-one grocery stores are within the City of Atlanta limits, three additional stores are within a half-mile from the official city boundary. ALDI (2), Buy Low (1), Fresh Market (2), Kroger (13), Piggly Wiggly (2), Publix (16), Sprouts Farmers Markets (1), Trader Joes (2), Wayfield Foods (1), Whole foods (4). These 44 grocery stores serve a total of 40,141 residents living in LILA.

CITY OF ATLANTA GROCERY STORES (2020)





NEIGHBORHOOD MARKETS 2020

IMPACT ON FRESH FOOD ACCESS

39

Neighborhood Markets

51%

Accept SNAP/EBT

+40,236

Additional Atlanta residents **can now** access fresh food.

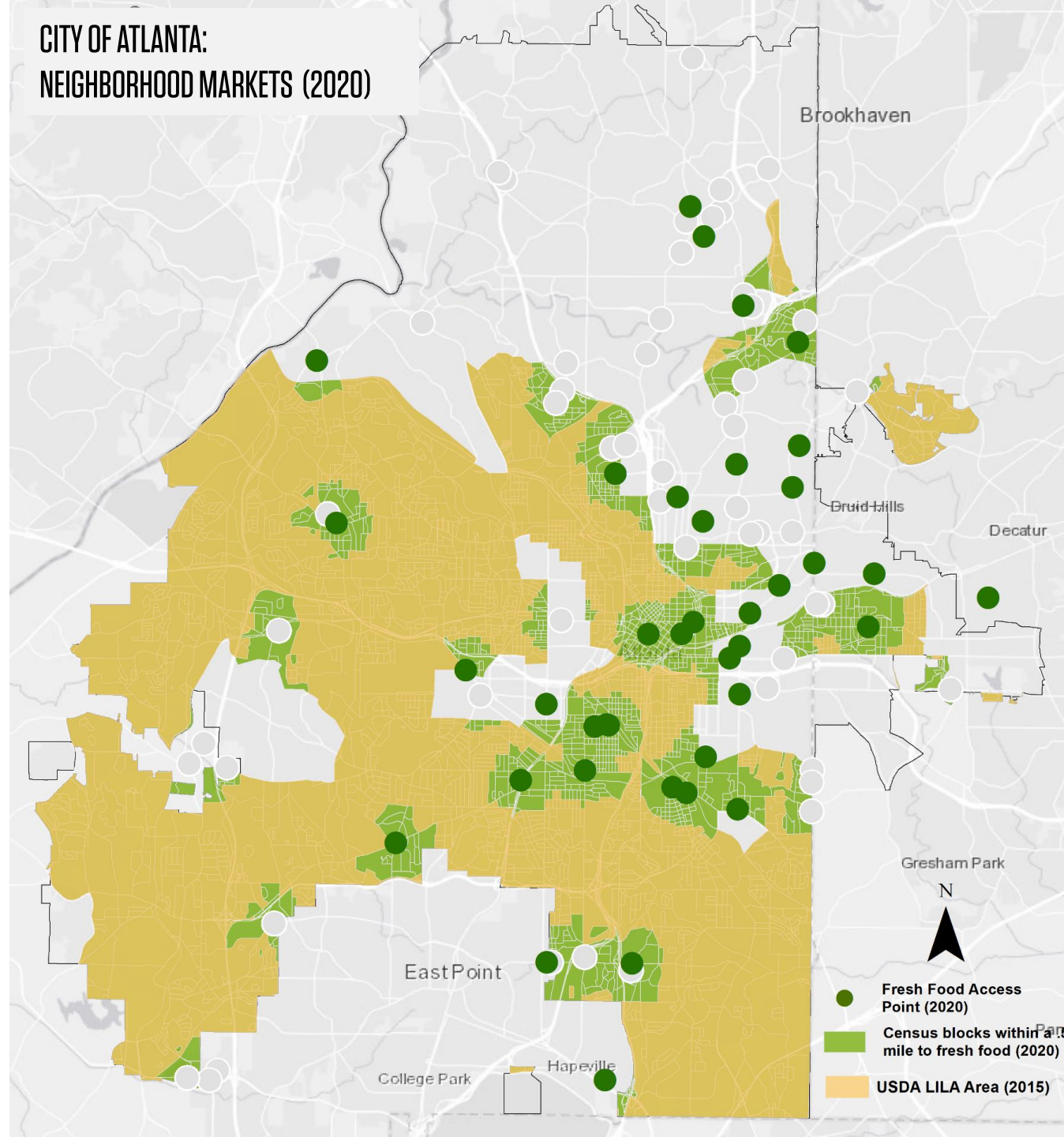
161,404

Atlanta residents living in **LILA area**, reduced from 201,640 to 161,404.

*39 neighborhood markets sold fresh food items including meat (ex: butcher shop, seafood shop) and/or fresh fruits, vegetables, dairy. Convenient stores providing only a token basket of bananas or apples omitted.

These 39 neighborhood markets serve a total of 55,073 residents living in LILA area.

CITY OF ATLANTA: NEIGHBORHOOD MARKETS (2020)





FARMERS MARKETS 2020

IMPACT ON FRESH FOOD ACCESS

19

Farmers Markets

68 %

Accept Double SNAP/EBT

+16,533

Additional Atlanta residents **now have access to fresh food weekly, 50% of the year.**
+2,830 year-around.

144,871*summer

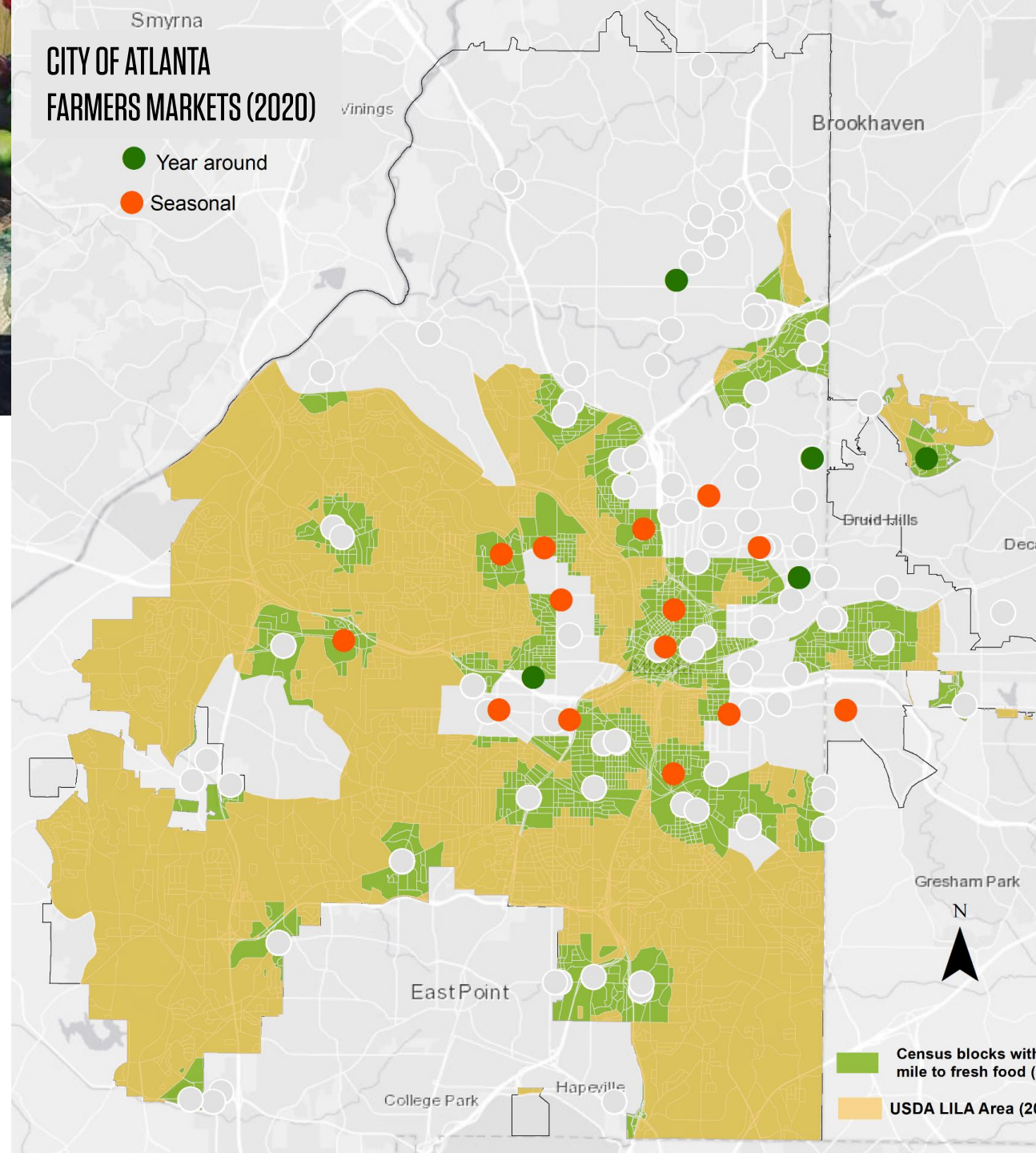
Atlanta residents living in **LILA area** reduced from 161,404 to 144,871

158,574*winter

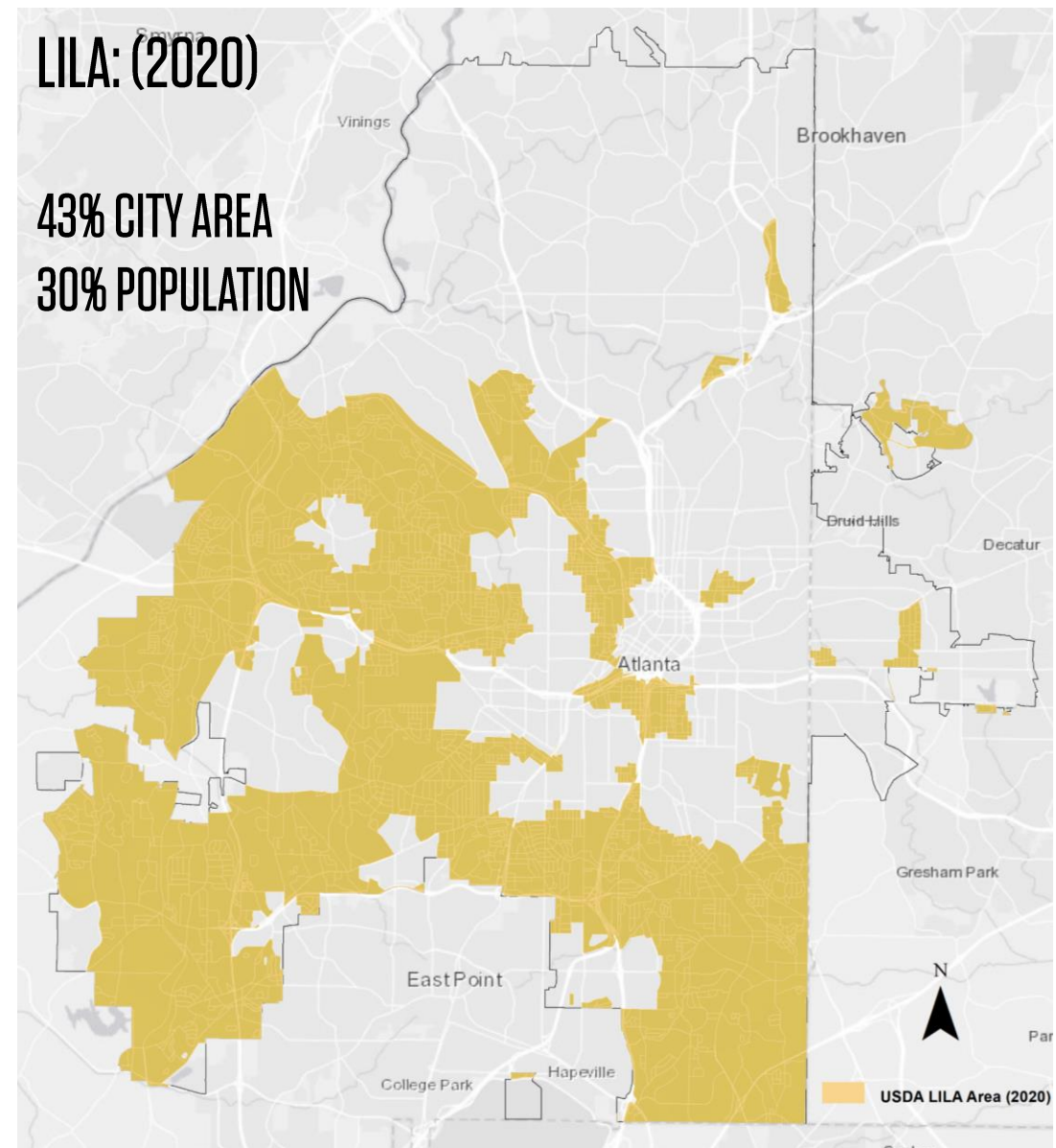
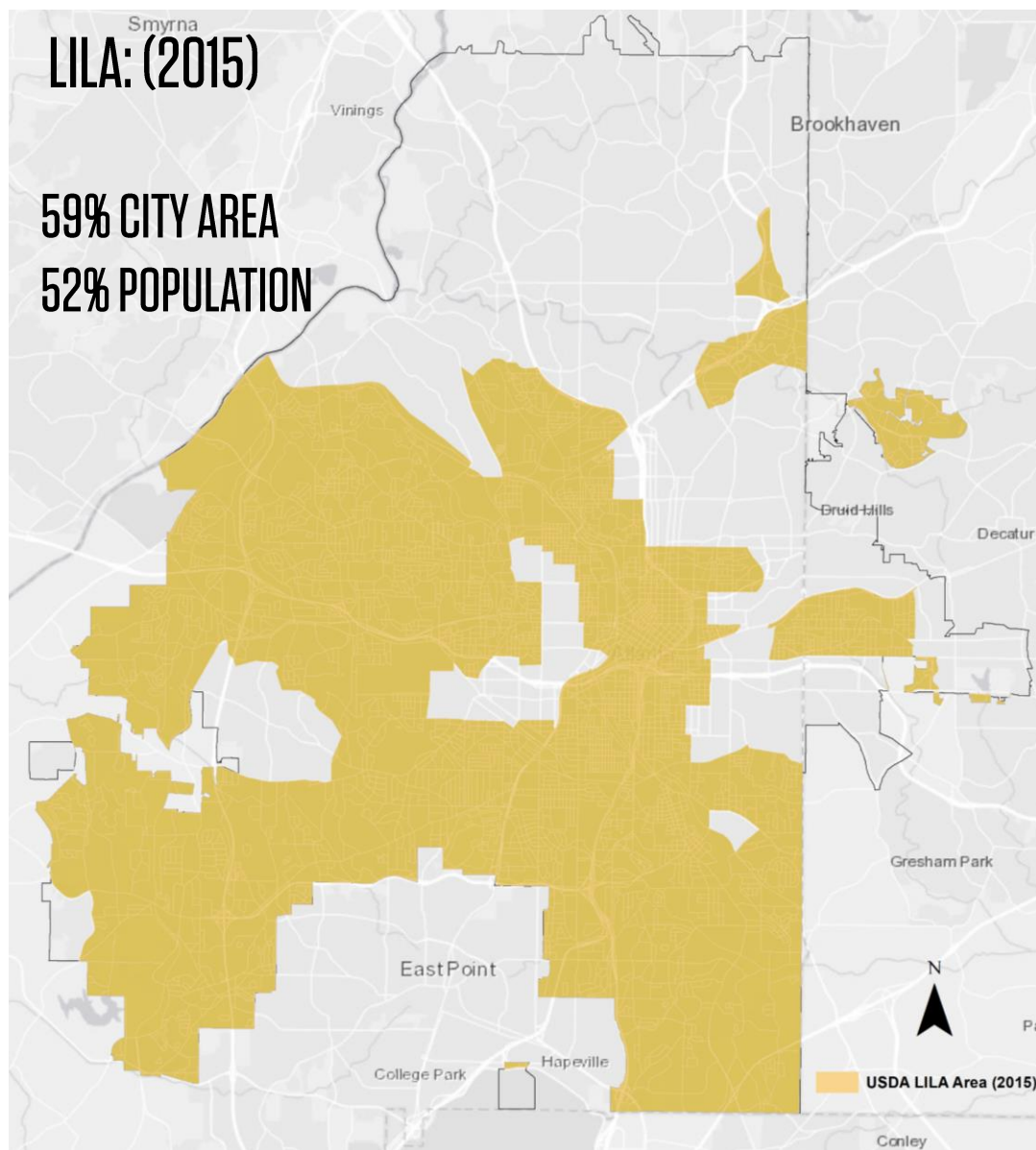
* These 19 farmers markets serve a total of 82,175 residents living in LILA during the peak season six months a year.

CITY OF ATLANTA FARMERS MARKETS (2020)

- Year around
- Seasonal



Census blocks with
mile to fresh food ()
USDA LILA Area (2010)



Change in LILA (2015-2020): An additional 22% of population is within a half-mile to fresh, affordable food.
The total area of LILA decreased by 16%

*Percentage: Divided updated population of residents still in LILA reported (using 2015 census block data) with estimate total pop for City of Atlanta in 2015. Estimate of the total population of City of Atlanta for 2015: 462,433 (Based on mean of City of Atlanta total pop: 426,821 (US Census 2010) & 498,044 (US Census 2018). ** The 2020 data reflects Atlanta food access during peak growing season when all markets are operating.



Atlanta must reach an
additional 15% or 70,000
people living in LILA areas
to reach

OUR GOAL:

85% of City of Atlanta
residents will be within a
half-mile to fresh, affordable
food by 2022.

Fresh Food Access Overlay: 2020

Remove barriers & incentivize fresh food access points for residents (2020-2022)

Farms stands: update 2014 Urban Ag Ordinance to enable on-site sales for urban farms. Enable Special Use Permit (SUP). Permit fee waived within overlay.

- Benefits **32,714 residents** in overlay that live within a .5 mile to existing farms. Extends 2020 access to **17,579 residents**.
- Benefits **18 urban farms:** pioneering fresh food businesses in LILA area.
- Benefits **neighborhood-scale economy**.

Case Study:

Aluma Farms: Thursday Farm stand feeds many families on westside. Offers EBT and Double SNAP. Owners live in same neighborhood.

